

**ALBERTA GAMING RESEARCH INSTITUTE**  
A World Leader in Gambling Research  
**ANNUAL REPORT • NO. 6 • 2005 - 2006**





## **TABLE OF CONTENTS**

<b>1</b>	<b>Message from the Board Chair</b>
<b>2</b>	<b>Message from the Executive Director</b>
<b>3</b>	<b>The Alberta Gaming Research Institute...</b>
<b>5</b>	<b>Research Activity</b>
<b>5</b>	• <b>Research Excellence</b>
<b>7</b>	• <b>Scholarly Research Publications</b>
<b>8</b>	• <b>Institute Publications</b>
<b>8</b>	• <b>Institute Website</b>
<b>9</b>	• <b>Institute Library</b>
<b>10</b>	• <b>Research Programs</b>
<b>13</b>	<b>Six Collaborative Research Initiatives</b>
<b>18</b>	<b>Audited Financial Statements</b>
<b>29</b>	<b>Alberta Gaming Research Institute Board of Directors</b>
<b>32</b>	<b>Contact Information</b>
<b>33</b>	<b>Credits</b>

## MESSAGE FROM THE BOARD CHAIR

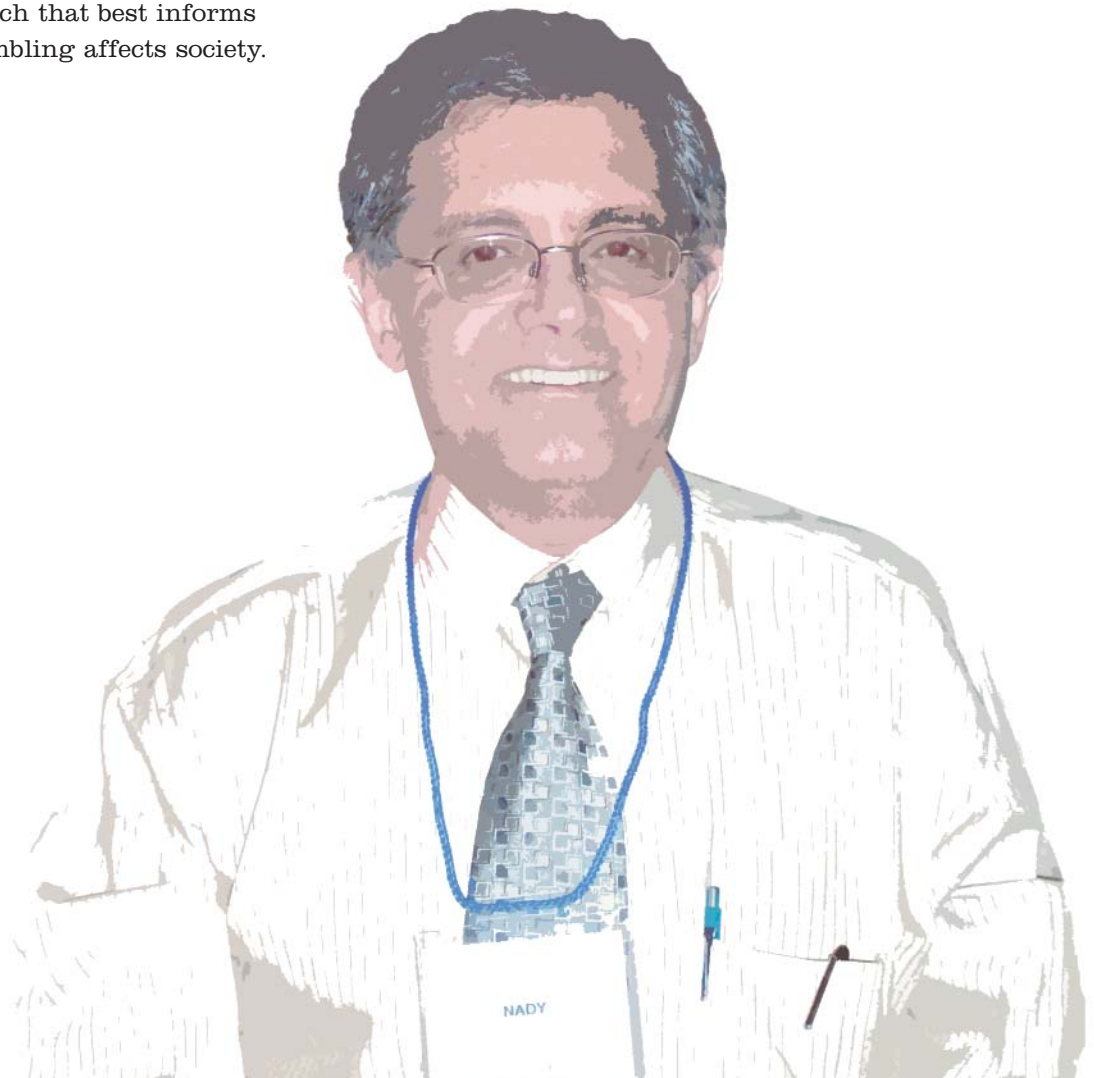
It gives me great pleasure, as Board Chair of the Alberta Gaming Research Institute, to welcome you, our stakeholders, colleagues and other interested readers, to the Sixth Annual Report of the Institute, for the year ending March 31, 2006. Among other things, this Report reflects the Institute's continued growth and development in the field of gaming research. As it expands its scope to include more strategic and collaborative research, the Institute has increased its reputation both nationally and internationally as a significant and respected contributor to the advancement of gaming knowledge. In this sense we continue to be gratified with the extent to which we are solidifying linkages with national and international research affiliates as well as the recognition and awards given to our researchers at meetings and conferences.

The Institute continues to promote and support research in the four fundamental domains: biopsychological, sociocultural, economic and public policy. It is pleasing to see many Institute-funded research projects completed and their results made available both within the research communities and to the general public. I am also pleased that the largest project ever funded by the Institute, the "Leisure, Lifestyle, Lifecycle Project", is underway and promises to provide both beneficial and useful data as it evolves over its five-year mandate.

I want to acknowledge our researchers, supporters and all those who work with the Institute to make it what it is. On behalf of the Board, I confirm our commitment to develop research expertise in all four domains and to continue to sponsor high quality, independent research that best informs Albertans and others of how gambling affects society.



Nady el-Guebaly, MD



## MESSAGE FROM THE EXECUTIVE DIRECTOR

In 2005-06, the Alberta Gaming Research Institute continued to expand its research horizons, in terms of both increasing its dissemination of research results and focusing on collaborative research initiatives. Building on our growing reputation, and reflecting our vision of an institute that is internationally recognized for its contribution to the scientific knowledge base in gambling research, the Institute increased its involvement in collaborative strategic projects.

These important partnership research initiatives are in fact setting a distinct path for the Institute as it matures into an agency that sponsors and facilitates strategic research that is multi-disciplinary, multi-organizational and multi-jurisdictional in nature. While the Institute continues to encourage and fund individual research projects, it is also emphatically promoting strategic, collaborative research projects, from which research outcomes that have a broader application will derive. Several of these, in particular the multi-year cohort-based "Leisure, Lifestyle, Lifecycle Project" (the largest ever funded by the Institute), became fully operational during 2005-06. It is anticipated that research results will be of significant benefit to Albertans as well as national and international gambling research communities.

While the Institute did not host its annual conference during the 2005-06 fiscal year (the sixth Annual Conference was held in April, 2006), it remained very active in other areas. In August 2005, a 'Stakeholders Meeting' was held. Its purpose was to identify common research priorities and deliverables. The outcome of the meeting provided the basis for a draft version of a 'Strategic Research Plan', a formative document for the pending five-year funding agreement between the Minister of Gaming and the Institute's three partner universities.

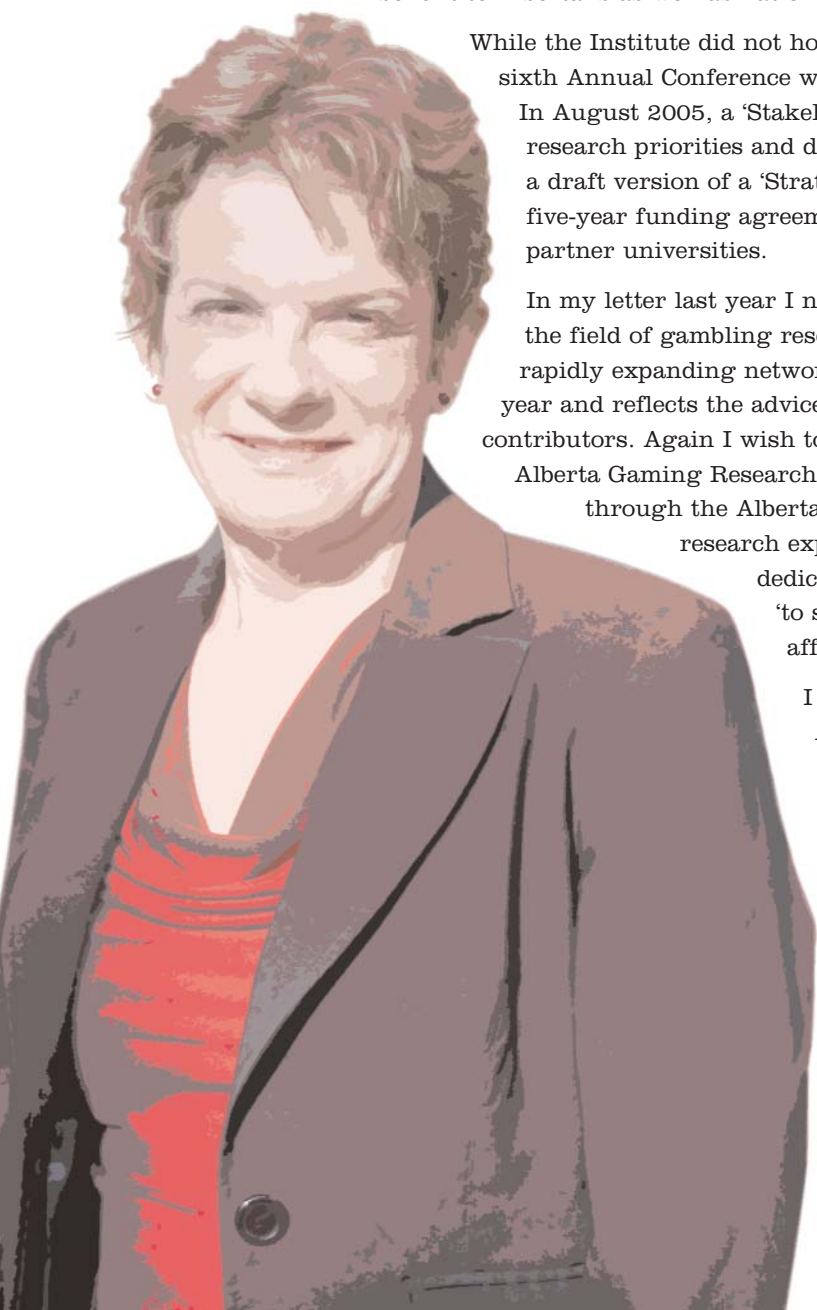
In my letter last year I noted that the leadership position that Alberta is assuming in the field of gambling research is a tribute to the commitment and dedication of its rapidly expanding network of academic researchers. This statement is even truer this year and reflects the advice, commitment and support of various significant contributors. Again I wish to acknowledge, with gratitude, the advisory input of the Alberta Gaming Research Council, the funding support from the provincial government through the Alberta Lottery Fund; and, as always, the resource support and research expertise provided by the partner universities. This combined dedication is invaluable towards meeting the Institute's mission 'to significantly improve Albertans' knowledge of how gambling affects society'.

I appreciate your endorsement and support of the work of the Alberta Gaming Research Institute. For my part, I re-affirm my commitment to ensuring that the highest standards of research excellence continue, as we increasingly focus on collaborative strategic research initiatives. I welcome your comments on this Annual Report, encourage you to attend our future research events, and look forward to fielding any questions you may have about the Institute's research activities.

Sincerely,



Vickii Williams



## THE ALBERTA GAMING RESEARCH INSTITUTE...

**Vision: An institute that is internationally recognized for its contribution to the scientific knowledge base in gambling research.**

**Mission: To significantly improve Albertans' knowledge of how gambling affects society.**

The primary aim of the Alberta Gaming Research Institute, a consortium of the University of Alberta, University of Calgary, and University of Lethbridge, is to support academic research related to gambling. It is achieved through fostering research excellence, building research capacity at the partner Universities, facilitating knowledge transfer, promoting strategic and collaborative partnerships and initiatives, and maximizing the tri-university partnership.

Collaboration among these research universities provides the Institute with considerable versatility and the opportunity to match research expertise with specific projects. The Institute also promotes and fosters interdisciplinary and inter-University research both provincially and internationally. The Institute links researchers, policy-makers, community organizations, the gambling industry, other major stakeholders, and the general public to improve understanding of the impacts of gambling.

The Institute's operational/administrative hub is located on the University of Alberta campus and is staffed by an Executive Director, Administrative Assistant and temporary project staff. The Institute Librarian is located at the University of Lethbridge.

### Alberta Gaming Research Institute Board

The Institute is governed and managed by a Board consisting of two Directors appointed by and from each partner university and the Chair of the Alberta Gaming Research Council. The Executive Director serves in an advisory role to the Board (for more information see page 32).

### Alberta Gaming Research Council

The Alberta Gaming Research Council is a broad-based advisory group to the Minister of Gaming. The Council is made up of nine members, including constituency representatives (industry, seniors, First Nations, community), one from each of the following organizations: Alberta Alcohol and Drug Abuse Commission, Alberta Health and Wellness, Alberta Gaming, and the Alberta Gaming Research Institute Board Chair. The Council was established to identify research priorities and help direct the research activities of the Institute.

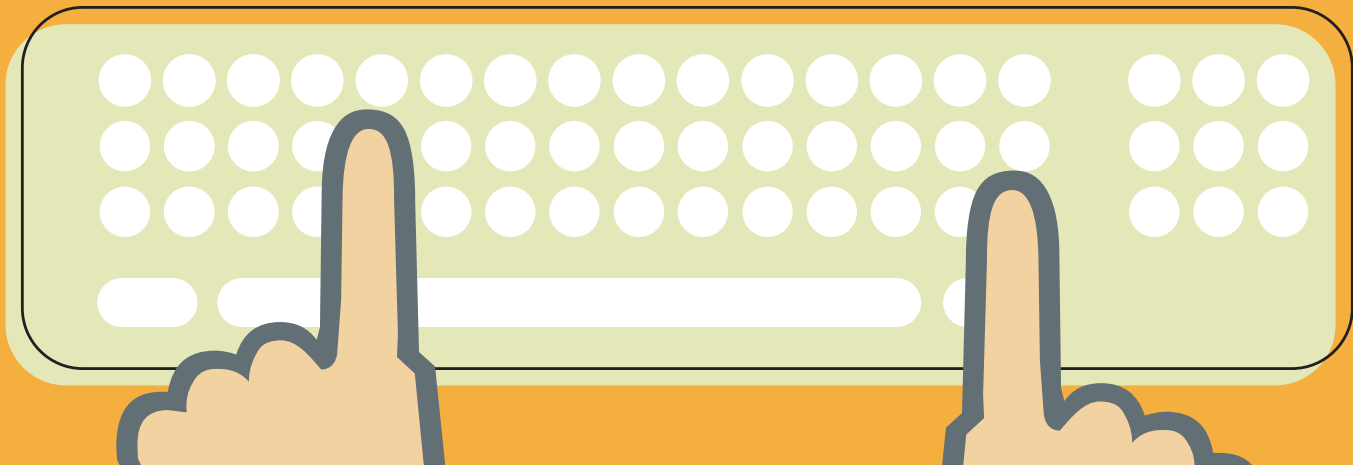
### Institute (Partner) Universities

The partner universities that comprise the Alberta Gaming Research Institute are the University of Alberta, the University of Calgary, and the University of Lethbridge. Capacity-building activities related to promoting and developing gambling research are the focus of the partner universities. In addition to promoting specific research initiatives, each University employs a 'node coordinator' whose primary responsibility is to identify and stimulate interest in gambling research and to promote interdisciplinary as well as cross-university and external collaborative arrangements. Institute support for capacity building includes funding faculty positions and research assistantships, sponsoring visiting scholars, and contributing to researcher establishment costs.

### Focus and Purposes

The focus of the Institute is to facilitate and support academic research that can be used to frame and implement effective public policies and responsible gaming and gambling practices while contributing to the scientific knowledge base. Its core purposes include:

- 1 to expand the depth and breadth of scientific knowledge of gaming and gambling in four broad and overlapping domains:
  - a. bio-psychological and health care,
  - b. economic,
  - c. socio-cultural,
  - d. government and industry policy and practice;
- 2 act as a clearinghouse for gaming research;
- 3 facilitate the ready access to, and the development of, the applicable library collections of the Institute Universities;
- 4 forge strong collaborative links with national and international scholars and organizations involved in gaming/gambling research and studies;
- 5 provide education about current knowledge through research publications and reporting of research results;
- 6 sponsor research that is peer reviewed, of the highest academic quality and related to emergent gaming activities;
- 7 to the extent reasonably possible, promote research in priority areas.



## RESEARCH ACTIVITY

### Research Excellence

Since its inception the Alberta Gaming Research Institute has worked to cultivate an environment that consistently focuses on research excellence, from individual research projects which characterized the Institute's early years to Institute-sponsored multi-disciplinary, multi-jurisdictional partnerships and collaborative research initiatives. To maintain that excellence, the Institute utilizes a number of processes to ensure a high level of internal accountability. All prospective proposals for funding under the Institute's competitive research program must be submitted for peer review by acknowledged international experts. All grants awarded to successful applicants are administered through the research offices of their home universities, and applicants themselves are required to provide regular status reports detailing the progress of their projects. Summaries of the status reports are subsequently made available to all stakeholders through the Institute's print and online publications.

In an academic context, "research excellence" relates primarily to the publication of research findings in scholarly, peer-reviewed sources such as journal articles, edited books, and published conference proceedings. A related measure of research quality is the impact or importance of these publications and their contributions to the development of the discipline's scientific knowledge base.

The governance and administration of the Institute's research program as well as the resultant high-quality funded research results communicated by researchers have been indispensable in establishing the Institute's reputation for research excellence. As noted in last year's Annual Report, this status was independently confirmed by an international team of gambling research experts who in January 2005 conducted an external review of the Institute's performance. There is every

reason to expect that the Alberta Gaming Research Institute's ongoing research mission will continue to be recognized and valued by other academics, government policy-makers and agencies, as well as the public at large.

### Capacity Building at Institute Universities

Over the course of fiscal 2005-06, each of the Institute Universities received funds which are earmarked for creating and supporting their capacity to undertake gambling-related research. Capacity building funds directly support a research node coordinator position at each of the three universities. These funds were also instrumental in providing opportunities for one post-doctoral fellowship at the University of Alberta and a Research Associate position at the University of Lethbridge. Activities undertaken as part of the capacity-building initiative involve both facilitative duties as well as scholarly activities.

Facilitative duties performed by node coordinators pertain to activities such as conference program organization, inter-university research cooperation, supervision of research assistants, maintaining contact with university researchers involved in or interested in gambling-related research, and working with the Institute's Executive Director with respect to public relations, governmental liaison, and research issues. Periodically, it may also include fielding both print and broadcast media inquiries on gambling-related topics.

The Institute's capacity-building funding enabled numerous scholarly activities to be undertaken over the course of 2005-06. Node coordinators were involved as lead investigators in many of the Institute's funded projects - including the collaborative "Leisure, Lifestyle, Lifecycle Project". These projects resulted in numerous academic publications, invited conference presentations, and consultations. A number of graduate students at both the

doctoral and masters level were also supervised and mentored by the node coordinators.

An example of capacity building at the University of Calgary was a graduate-level course taught to 13 students by professor Dr. David Hodgins which contained a significant gambling component. Dr. Rob Williams' state-of-the-art video lottery terminal (VLT) laboratory was supported by capacity building funding at the University of Lethbridge. At the University of Alberta, capacity building funds made a post-doctoral fellowship opportunity available to Dr. DJ Williams and provided Dr. Garry Smith adequate resources to assist with research required for two gambling-related books he is currently authoring.

### Peer Review

Proposals from researchers seeking Institute research funding must be first endorsed by gambling researchers selected from a distinguished international roster of academics. The involved reviewers provide their critical comments on the merits of each research proposal and make recommendations as to how it might be strengthened. A subcommittee of Institute Board members then makes a final determination as to which projects will receive research funding, based on the external reviewers' recommendations, as well as on the Institute's own research priorities, which are identified in grant submission guidelines.

Another form of peer review occurs when results from Institute-funded research projects are submitted to such scholarly publications as the *Journal of Gambling Issues* or *Addiction Research and Theory*. Research findings are usually submitted to publishers as written manuscripts. The publications' editors then subject the work to the scrutiny of several others who are deemed experts in the field; the reviewers then provide their evaluation with recommendations as to whether or not the manuscript is acceptable for publication. Accordingly, peer review ensures that the Institute's research findings meet the rigorous academic standards applied to all scholarly publications.

### Accountability

The research governance, research administration, and reporting procedures of the Alberta Gaming Research Institute are structured so as to be both accountable and transparent. Institute-approved research grants are administered by the research grant offices of the principal researcher's home institution, thereby ensuring that the projects are managed in a fiscally and ethically accountable manner. To ensure the Institute's research program transparency, the Institute requires that the principal investigators provide two progress reports each year on the status of their funded research projects. Details of individual research projects are regularly updated on the Institute's website and are also communicated through other Institute publications such as the '*Research Reveals...*' newsletter.





## Reputation

The Institute has established its reputation for research excellence by focusing on the quality and relevance of the research undertaken by Institute-funded investigators. Evidence of the Institute's growing reputation is reflected in the following:

- a robust record of scholarly publication by funded investigators;
- requests to individual researchers and to the Institute as a whole to participate in national and international initiatives;
- evaluations of Institute conferences and symposia by invited presenters and participants as both instructive and meaningful;
- a strongly favourable review of the Institute by a team of international experts;
- participation in a growing number of multi-disciplinary, multi-jurisdictional strategic partnership initiatives; and
- successful ongoing collaboration with and among the three partner universities: Alberta, Calgary, and Lethbridge.

## Scholarly Research Publications

During the 2005-06 fiscal year, Institute researchers were active in submitting and publishing scholarly, peer-reviewed journal articles in leading gambling and discipline-specific publications. Following is a listing of Institute-related publications (articles, chapters and reports):

- Belanger, Y. D. (2005). Building the Opaskwayak Cree Nation economy: A case study in resilience. *Journal of Aboriginal Economic Development*, 4(2), 71-83.
- Crockford, D. N., Goodyear, B., Edwards, J., Quickfall, J., & el-Guebaly, N. (2005). Cue-induced brain activity in pathological gamblers. *Biological Psychiatry*, 58, 787-795.
- el-Guebaly, N., Currie, S. R., Hodgins, D. C., Smith, G. J., & Williams, R. J. (2005). *Adapting the Reno Model for Alberta*. Final report submitted to the Alberta Alcohol and Drug Abuse Commission. June 1, 2005.
- Hagen, B., Nixon, G., & Solowoniuk, J. (2005). Stacking the odds: A phenomenological study of non-problem gambling in later life. *Canadian Journal on Aging*, 24(4), 115-124.
- Hinch, T. D., & Walker, G. J. (2005). Casino markets: A study of tourist and local patrons. *Tourism and Hospitality Research: The Surrey Quarterly Review*, 6, 72-87.
- Hodgins, D. C., & Peden, N. (2005). Natural course of gambling disorders: Forty-month follow-up. *Journal of Gambling Issues*, 14.
- Holub, A., & Hodgins, D.C. (2005). Development of the Temptations for Gambling Questionnaire: A measure of temptation in recently quit gamblers. *Addiction Research and Theory*, 13, 179-191.
- Nixon, G., & Solowoniuk, J. (2005). An insider's look into the process of recovering from pathological gambling disorder: An existential phenomenological inquiry. *International Journal of Mental Health and Addiction*, 3(2), 26-34.
- Nixon, G., Solowiniuk, J., Hagen, B., & Williams, R. J. (2005). "Double trouble": The lived experience of problem and pathological gambling in later life. *Journal of Gambling Issues*, 14.
- Tavares, H., Zilberman, M. L., Hodgins, D. C., & el-Guebaly, N. (2005). Comparison of Craving Between Pathological Gamblers and Alcoholics. *Alcoholism: Clinical & Experimental Research*, 29(8), 1427-1431.
- Walls, W. D., & P. J. Harvey. (2005). Modeling gambling demand in a laboratory casino: Discovering the importance of individual-specific effects. In L. V. Williams, (Ed.), *Information Efficiency in Financial and Betting Markets*. Cambridge: Cambridge University Press.

- Williams, R. J. & Connolly, D. (2006). Does learning about the mathematics of gambling change gambling behavior? *Psychology of Addictive Behaviors*, 20(1), 62-68.
- Williams, R. J., Royston, J., & Hagen, B. (2005). Gambling and problem gambling within forensic populations: A review of the literature. *Criminal Justice and Behavior: An International Journal*, 32(6), 665-689.

Scholarly publications associated with individual research projects can be obtained by visiting the Research section of the Institute's web site: <http://www.abgaminginstitute.ualberta.ca/research.cfm>

### Institute Publications

In addition to the scholarly publications authored by Institute-funded researchers, the Institute also publishes a bi-monthly newsletter, *'Research Reveals...'*. The newsletter, published in both print and electronic form (online), has proven to be an effective means of disseminating information about the Institute's activities. Newsletter articles generally tend to profile Institute-funded researchers and communicate basic findings from their research. During 2005-06, the newsletter included the following items:

**April/May 2005:** Summaries of presentations from the fourth Annual Institute Conference, "Public Policy Implications of Gambling Research."

**June/July 2005:** Researcher Dr. DJ Williams, Post-Doctoral Fellow at the University of Alberta, examines gambling in prisons as a leisure activity; Institute Board Chair Dr. Nady el-Guebaly is reappointed.

**August/September 2005:** Release of the Institute's fifth Annual Report in September; profile of the Institute's administrative office in HUB Mall at the University of Alberta, and of Executive Director Vickii Williams and Administrative Assistant Catherine Anley.

**October/November 2005:** Dr. Yale Belanger, Department of Native American Studies, University of Lethbridge examines First Nations communities and casino gaming; listing of First Nations casinos in Canada.

**December 2005/January 2006:** Preview of the 2006 Conference on Gambling Research, "Social and Economic Costs and Benefits of Gambling"; Alberta Centennial medals awarded to Sheila Murphy, Chair of the Alberta Gaming Research Council and Dr. Nady el-Guebaly, Chair of the Institute Board of Directors; Conference on Gambling And Risk-Taking (Lake Tahoe).

**February/March 2006:** Panelists discuss the implications of Aboriginal casino gaming in Southern Alberta; Kate Diskin receives New Investigator Award; 2006 conference program finalized.

All newsletters are available online under "Newsletter" on the Institute's website ([www.abgaminginstitute.ualberta.ca/newsletter.cfm](http://www.abgaminginstitute.ualberta.ca/newsletter.cfm)).

The Institute also published its *2004-05 Annual Report and Report Card* in September 2005. The Report summarized the Institute's activities during the previous year, with a special emphasis on "Five Areas of Focus," as well as including the Institute's Audited Financial Statements. The Report can be found online under "About the Institute" on the Institute's website.

### Institute Website

The Institute's website is its primary locus for information dissemination, and is updated regularly. The site contains details of and links to the research projects and activities undertaken or funded by the Institute. It also includes a useful and comprehensive variety of other resources of interest to gaming researchers and the general public, including status reports and updates for all Institute-funded research grants and small grants. Among the developments that have occurred on the website in 2005-06 are the following:

It is now possible to subscribe by email (and self-manage the subscription) to both the monthly AGRI Library Newsletter and the bi-monthly notification of new issues of **'Research Reveals...'**.

Those using newsreaders can subscribe to both the "Alberta Gambling News" newsfeed and the "Gaming Research Weblog," both of which are produced by the Institute Library. Whenever either of these resources is updated, the updates will be automatically detected and displayed in the newsreaders of subscribers.

Presentations from the Institute's 2005 conference have been made available online (presentations from the Institute's 2006 conference, which took place in the 2006-07 fiscal year, are also available). A listing of "Casinos & Racinos in Canada" was created and posted on the website, and "Casinos in Alberta" was also updated.

### Institute Library

The Institute's Library is administered from the University of Lethbridge. With collections at all three participating university locations, the library continued to be active during 2005-06.

Numerous gaming-related materials were identified, purchased, and added to the Library collections of the three participating universities. At the University of Lethbridge, the focus of the library's collection-building activities included all aspects of gambling literature (including the "grey literature"). Funds were also allocated to the University of Calgary and the University of Alberta Libraries for collection building during the year.

The digitization aspect of collection building continued in collaboration with the University of Calgary, which provided hosting in a DSPACE repository (<https://dspace.ucalgary.ca>). As of March 31, 2006, 280 "full-text" items were included in the collection. The project has largely been completed. Most items in the digitized collection have been individually

scanned and optimized by the Image Centre to permit electronic access via the Internet. The majority of these files do not exist elsewhere in electronic format.

Several of the library's web bibliographies were updated and a number of other resources (e.g., "Social & Economic Costs & Benefits of Gambling") were created. Postings to the Library's popular Gaming Research Weblog were also made regularly. As of March 31, 2006, more than 1,300 documents were indexed in the Gambling Literature Database online collection, an increase of almost 300 items since March 31, 2005. A total of 190 requests for reference assistance, literature reviews, or instruction were received from Institute researchers and the general public over the course of the year. Publication details (i.e., journal article citations) for several completed Institute-funded research projects were made available on the Institute's 'Research' web pages (PDF, summaries, video clips, etc.). Discussions also were held with authors wishing to 'self-archive' their scholarly publications; and a monthly library newsletter about gambling-related resources available online has continued.

The Institute Librarian, Rhys Stevens, authored several of the Institute newsletters that appeared during 2005-06. He also was a guest lecturer in a Library Science 2000 class (November 2005) and authored a report detailing the five-year history of the Institute. He consulted with University of Alberta/University of Calgary liaison librarians on Institute-related library issues, worked closely with the Executive Director, Board Chair, node coordinators, and liaison librarians on several initiatives related to Institute business; and participated in the Institute's long-term planning session in Edmonton in August 2005.

## Research Programs

The Institute's research grant programs comprise three distinct types: **Major Grants, Small Grants, and Collaborative Initiative Grants.**

The intent of the Major Grants program is to elicit researcher-identified areas of gambling research from across four broad domains, while building research capacity in the Institute universities. The maximum award under the Major Grants program is \$80,000 per year with a two-year funding limit. Three new major grants were approved in 2005-06:

### Exploring Offender Gambling from Prison through Re-Entry: A Cross-National Investigation (Institute Funded Project #44)

*Dr. DJ Williams (Principal Investigator)  
Faculty of Physical Education and Recreation,  
University of Alberta*

This study will (a) explore offender prison and post-prison gambling in the context of the offender's transitional process into the community; and (b) consider the implications of offender prison and post-prison gambling within this transition. Data will be collected from various correctional institutions in Alberta, Utah and additional Canadian and US locations.

### The Alberta Lottery Fund and Funding Amateur Sports and Recreation: Public Awareness and Willingness to Support (Institute Funded Project #43)

*Dr. Daniel S. Mason (Principal Investigator),  
Faculty of Physical Education and Recreation,  
University of Alberta;  
Dr. Gordon J. Walker (Co-Principal  
Investigator), Faculty of Physical Education and  
Recreation, University of Alberta*

This study has two goals: (1) to examine Albertans' awareness of the Alberta Lottery Fund (ALF) and its provision of monies for amateur arts, sports, and recreation programs, services and facilities, as well as Albertans'

willingness to continue using ALF monies for this purpose; and (2) to examine Albertans' awareness of the ALF and its limited provision of monies for professional sports (Edmonton Oilers and Calgary Flames), as well as their willingness to use such monies for this purpose.

### CRAFT (Community Reinforcement and Family Training) with Problem Gambling (Institute Funded Project #42)

*Dr. David Hodgins (Principal Investigator),  
Department of Psychology, University of  
Calgary*

The CRAFT approach will be modified into an individual treatment format for use with concerned significant others (CSOs) of problem gamblers.

**Major grants from prior granting cycles that were completed in 2005-06 include the following** (information about each can be found at the Institute's website):

### Economic Analysis Of Alternative Betting Duty Regimes

*Dr. W. David Walls (Principal Investigator),  
Department of Economics, University of Calgary*

### Institute Funded Project #28

### Prevention of Problem Gambling: A School-Based Intervention

Dr. Robert Williams (Principal Investigator), Alberta Gaming Research Institute, School of Health Sciences, University of Lethbridge; Dr. Shawn Currie (Principal Investigator), Clinical Psychologist, Addiction Centre, Foothills Medical Centre, Foothills Hospital; Dr. Robert Wood (Principal Investigator), Department of Sociology, University of Lethbridge.

### Institute Funded Project #29

### Regulating Internet Gambling Through the Banking and Credit Industry

*Dr. Peter Bowal (Principal Investigator),  
Haskayne School of Business, University  
of Calgary*

### Institute Funded Project #31

## An Empirical Approach to Developing Low-Risk Gambling Guidelines

*Dr. Shawn Currie (Principal Investigator), Clinical Psychologist, Addiction Centre, Foothills Medical Centre, Foothills Hospital*

**Institute Funded Project #32**

## A Review of Technical Aspects of Customer-Centric Internet Gaming Literature

*Dr. Behrouz Homayoun Far (Principal Investigator), Department of Electrical and Computer Engineering, University of Calgary*

**Institute Funded Project #33**

## Examining Gambling and Problem Gambling in Albertan Aboriginal Communities

*Dr. Rob Williams (Principal Investigator), School of Health Sciences, University of Lethbridge*

**Institute Funded Project #37**

## The Effect of Ethnicity and Gender on Playing the Lottery

*Dr. Gordon J. Walker (Principal Investigator), Faculty of Physical Education and Recreation, University of Alberta*

**Institute Funded Project #41**

The purpose of the **Small Grants program** is to promote the development of gambling research capacity in the Institute universities with a general focus on the four identified research domains. In most cases, awards are used to develop pilot projects, annotated literature reviews, or the administration of surveys. The maximum award under this open application program is \$10,000, and projects are normally completed within one year. **Four small grants were approved and accepted in the 2005-06 granting cycle:**

## Delinquency and Gambling: A Pilot Study of Their Inter-Relationship and Common Determinants

*Dr. Martin Lalumière (Principal Investigator),*

*Associate Professor, Department of Psychology & Neuroscience, University of Lethbridge*

The nature of the relationship between gambling and delinquency will be explored in this study through the laboratory investigation of personality and situational determinants common to both.

## Examining Market Efficiency in Exotic Bets at Hong Kong and Japanese Horse Tracks

*Dr. W. David Walls (Principal Investigator), Department of Economics, University of Calgary*

Data on bet volumes, odds and race outcomes will be obtained from the Japanese Racing Authority and the Hong Kong Jockey Club. The research will obtain new and original results in the study of horse track gambling that will be directly comparable with results already published.

## Analysis of the Impact of Online Gaming Using Data Mining

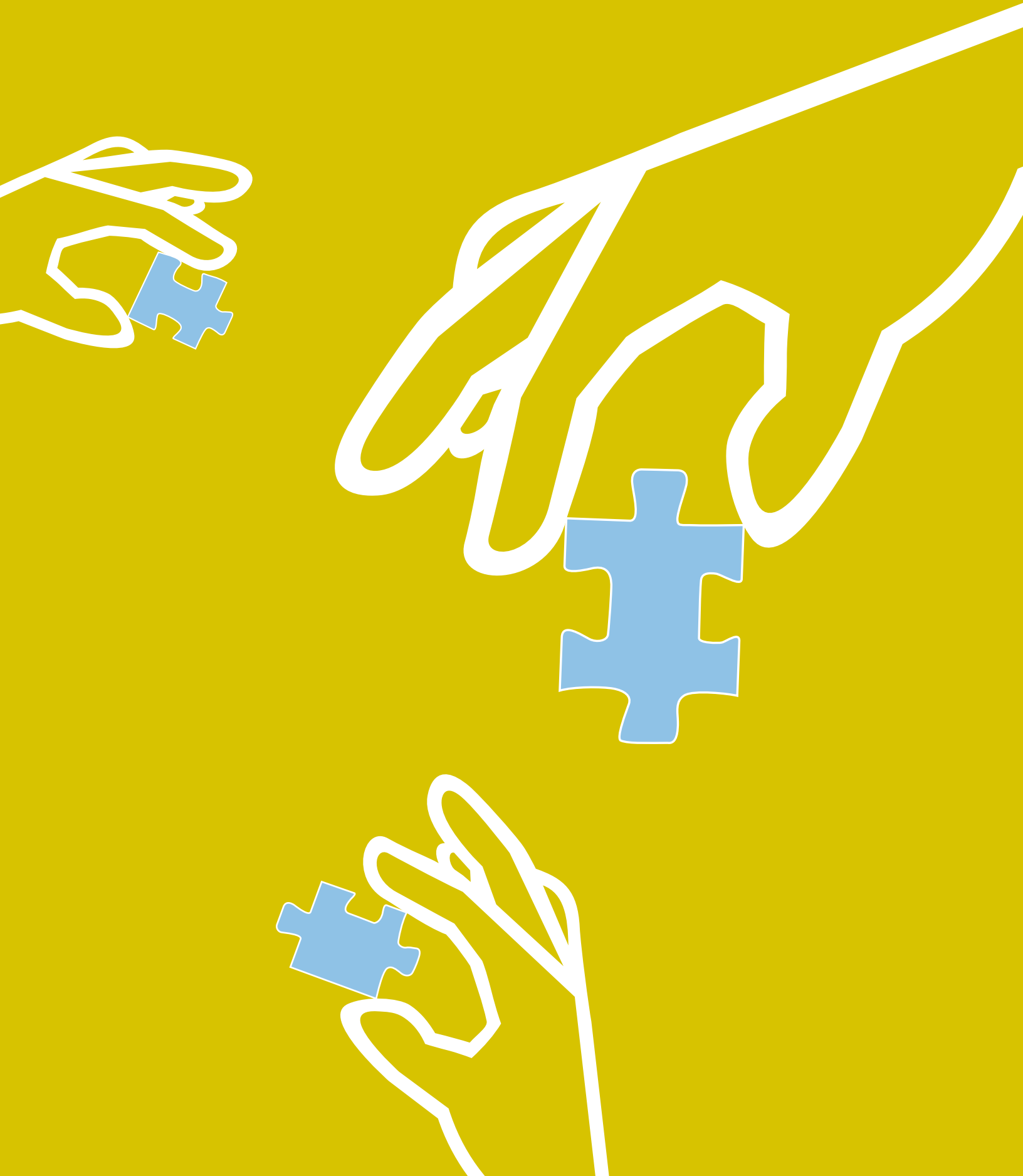
*Dr. Henry Leung (Principal Investigator), Department of Electrical and Computer Engineering, University of Calgary*

This project addresses the need for modeling online gaming from a systematic viewpoint to predict its impact in various related fields.

## Spatial Accessibility as an Environmental Factor of Gambling in Alberta

*Dr. M. John Hodgson (Principal Investigator), Professor Emeritus, Earth and Atmospheric Sciences, University of Alberta*

The project will address the issue of the geographic distribution of gambling and alcohol opportunities at the local level. It will advance our understanding of the spatial patterning of gambling opportunities in relation to neighbourhood socio-economic conditions and problem gambling. Another outcome of this project will be a set of tested tools, techniques and routines for investigating the problem of gambling.



## SIX COLLABORATIVE RESEARCH INITIATIVES

In 2003-04, the Alberta Gaming Research Institute introduced a new funding program devoted to Strategic Partnership and Collaborative Research Grants. Its underlying goal was to strengthen the Institute's ties with other academic institutions and researchers in both the public and private sectors, across Canada and internationally. Since the program commenced, six major inter-organizational and multi-jurisdictional collaborative research initiatives have been approved, involving and networking researchers from each of the Institute's member universities as well as researchers and collaborators from other academic institutions, the public and private sectors in Alberta, across Canada and the United States.



### 'What is a Crime?' Challenges and Alternatives (The Legalization of Gambling and its Consequences: A Cross-National Comparison)

[C. Campbell (PI), Dept. of Criminology, Douglas College, New Westminster, BC; G. Smith, Gambling Research Specialist, Government Studies, Faculty of Extension, University of Alberta; T. Hartnagel, Dept. of Sociology, University of Alberta]

Organizational affiliates: Law Commission of Canada (LCC - lead agency); AGRI; OPGRC

[This summary is adapted from the LCC website] Recent changes to the **Criminal Code of Canada** clearly indicate a transition from criminal prohibition to legalization of specific forms of gambling, as well as a consistent pattern of lesser federal responsibility and greater provincial authority over gambling matters. Legalization tends to blur public perception about the status of gambling. Some forms of legal gambling behaviour, despite their "legal and licensed status," are still nevertheless singled out for social censure independent of the criminal law. As gambling's legal status has been transformed, new forms of deviance associated with gambling have emerged (e.g., "excessive" gambling).

Despite an obvious transformation towards greater legalization, crime and gambling are nevertheless still directly linked in numerous ways (e.g., illegal gambling, criminogenic problem gambling, gambling venue crimes, family abuse, and organized crime). This study

examined the transformed status of gambling in Canadian society, with particular emphasis on the social, economic and cultural forces that changed the public perception of gambling from a sin, to a vice, to a mode of entertainment. "The Legalization of Gambling and its Consequences: A Cross-National Comparison" study is complete and is available at the LCC website: <http://www.lcc.gc.ca/>



### Measuring Problem Gambling in Adolescent Populations

[J. Wiebe (PI), Research Director, Responsible Gambling Council (Ontario) & Research Associate, CCSA; H. Wynne, Gambling Research Specialist, Wynne Resources, Edmonton, Alberta; R. Stinchfield, Clinical Psychologist & Asst. Prof., Dept. of Psychiatry, University of Minnesota Medical School; H. Skinner, Prof. and Chair, Dept. of Public Health Sciences, Faculty of Medicine, University of Toronto; J. Tremblay, Clinical Researcher, Ubald-Villeneuve Rehabilitation Centre and ALTO, Quebec; Expert panel - comprising approximately 15 researchers including two Alberta researchers: G. Smith, Gambling Research Specialist, Government Studies, Faculty of Extension, University of Alberta; R. Williams, School of Health Sciences, University of Lethbridge]

Organizational affiliates: CCSA - lead agency; AGRI; Addictions Foundation of Manitoba; Ministère de la Santé et des Services sociaux, Quebec; Ministry of Public Safety and Solicitor General, BC; Nova Scotia Gaming Foundation; OPGRC

This study arises out of a pressing need for a carefully developed and validated survey instrument for assessing gambling behaviour and identifying problem gambling in the adolescent population.

The purpose of this research project is to:

- reconceptualize the adolescent problem gambling construct;
- operationally define gambling and problem gambling in the adolescent population; and
- develop and evaluate a measure that will identify adolescent problem gamblers in the general population.

This proposed new instrument is provisionally called the Adolescent Problem Gambling Instrument (APGI).

This research project has been undertaken in two phases over a two-year period. Phase I focused on reconceptualizing the construct, formulating an operational definition of gambling and problem gambling in the adolescent population, and developing a measure or instrument that will identify adolescent problem gamblers. Phase II involves testing the new instrument to determine its reliability and validity in assessing gambling and identifying problem gambling among youth.



### Social and Economic Impact of Gambling

Organizational Affiliates:  
Interprovincial Steering

Committee (advisory); OPGRC - fund administration; CCSA - operating agency; provincial bodies that fund gambling research in Nova Scotia, Quebec, Ontario, Manitoba, British Columbia, and AGRI

*Dr. Mark Anielski, Principal Investigator; other researchers.*

In September 2000, an international symposium was held in Whistler, BC to discuss issues involved in estimating the social and economic impact of gambling. The meeting was organized by the CCSA in partnership with a number of

provinces, including Alberta, British Columbia, Manitoba, Quebec and Ontario.

In response to the ongoing need for research of this nature, the Interprovincial Steering Committee recommended that a realistic short-term goal (i.e., two-year time frame) would be to evolve a methodology for estimating the social and economic impact of gambling, to the point where it could be presented as a set of draft international guidelines for impact estimation, along with a research agenda that identifies the data requirements for implementation. Medium-term goals are to undertake the identified research in order to establish the required Canadian and international data sets; to develop and test the guidelines in different settings; and to refine the model accordingly. The longer-term goal is to apply the newly developed impact estimation methodology to comprehensive cost-benefit analyses of gambling in various jurisdictions. This specific project focuses on the identified short-term goals.

A draft report titled the ***Proposed Socio-Economic Impacts of Gambling Assessment Framework*** has been prepared by the project's Principal Investigator, Dr. Mark Anielski, for review by the Interprovincial Oversight Committee and the Expert Panel.



### Factors Influencing the Development of Responsible Gambling: A Prospective Study (The "Leisure, Lifestyle, Lifecycle Project")

*[Research team/Steering Committee: Dr. Nadyel-Guebaly, Head, Addiction Centre, Foothills Medical Centre & Professor, Dept. of Psychiatry, Faculty of Medicine, University of Calgary; D. Hodgins, Professor, Dept. of Psychology, Faculty of Social Sciences, University of Calgary; G. Smith, Gambling Research Specialist, Government Studies, Faculty of Extension & Professor Emeritus, University of Alberta; R. Williams, Professor, Addictions Counselling Program, School of Health Sciences, University of Lethbridge; R. Wood, Assistant Professor, Dept. of Sociology, Faculty of Arts,*



University of Lethbridge; D. Schopflocher, Biostatistician, Health Surveillance, Alberta Health and Wellness & Adjunct Professor, Epidemiology, Dept. of Public Health Sciences, Faculty of Medicine & Adjunct Professor, Faculty of Nursing, University of Alberta; V. Williams, Executive Director, AGRI]

Organizational affiliates: AGRI (lead agency)

The project, the largest ever sponsored by the Institute, was undertaken in large part to discover the determinants of gambling and disordered gambling: what factors lead people to gamble in any form and why some of them become problem gamblers. Following an initial pilot project which allowed researchers to refine and design the focus of the study, the project is in the first year of a five-year study that will eventually involve 2,000 Albertans equally divided among three regions (Calgary, Edmonton, and Lethbridge/Grande Prairie) in three age groups - adolescents, adults, and seniors, of both genders - in five distinct age cohorts: 13-to-15-year-olds; 18-to-20-year-olds; 23-to-25-year-olds; 43-to-45-year-olds; and 63-to-65-year-olds. Using the process of random-digit-dialing (RDD), the research team is deriving 50% of each cohort from the general population, and 50% from a "high risk" sample of individuals who are at greater risk for developing gambling problems because of their greater expenditure on and frequency of gambling. All 2,000 participants will be contacted for regular follow-up over the next four years; the contact process will allow for face-to-face interviews, mail-in, telephone or web-based assessments, to allow participants greater convenience and to maximize their retention in the study. The following questions were developed as the basis of the study, the answers to which would be reached through the collection and analysis of data from each cohort group over the length of the project:

1. What is the prevalence of gambling behaviours (type, range and degree of involvement) across the life cycle and in both genders?
2. What are the patterns of continuity and discontinuity (including incidence) in

gambling behaviours, as well as patterns of recovery from problems?

3. What behaviour patterns constitute responsible or problem gambling?
4. What is the impact on the various age cohorts of the changes that will occur within five years in gambling legislation, public attitudes and availability of preventative programs?
5. What are the biopsychosocial variables (risk and resilience) predicting the spectrum of gambling behaviours from responsible to problematic?

The researchers suggest that the development of a comprehensive biopsychosocial model of gambling behaviour will clarify the study's principal questions, as well as questions relating to the impact of gambling availability, legislative initiatives, and prevention programs on the development of problem and responsible gambling. They also hope to determine how all of these vary as a function of age and gender. The answers will have the potential to inform effective educational and legislative initiatives to maximize the benefits of gambling and minimize its harmful aspects.

The Alberta cohort study has already attracted national interest. Using the Alberta design, similar cohort studies are at various stages of planning in Manitoba and Ontario. For more information about the "Leisure, Lifestyle, Lifecycle Project", contact Dr. David Casey, Project Coordinator, at [dcasey@ucalgary.ca](mailto:dcasey@ucalgary.ca).



## Gambling in Canada 2005

[Dr. Roger Gibbins, Faculty Professor of Political Science, University of Calgary & President and CEO, Canada West Foundation (CWF); Jason Azmier, Senior Policy Analyst, CWF]

Organizational affiliates: Canada West Foundation (lead agency); AGRI

In 1998, the CWF began a three-year study, the Gambling in Canada Project, to examine issues

related to the expansion of gambling in Canada. Among that project's 16 reports were two that specifically examined the scope of gambling in Canada. The State of Gambling in Canada: an Inter-provincial Roadmap of Gambling and Its Impact (1998) and Gambling in Canada 2001: an Overview (2001).

The Gambling in Canada 2005 research initiative built on and updated previous CWF research on gambling policy. It had two objectives:

- \* to provide an independent, comparative national overview of gambling policy and statistics in Canada; and
- \* to inform policymakers, community groups, researchers, the media and the general public about current gambling policy and statistics.

***Gambling in Canada 2005: Statistics and Context*** represents CWF's third significant effort to introduce clarity and understanding to the issues of the growth of gambling. Using statistics for the 2003-04 fiscal year and historical trend analysis, the main gambling policy issues are given a numerical context. The full report can be accessed through the CWF website (from which this summary is adapted), at <http://www.cwf.ca>, under "Publications," or through the Institute's website.



### Canadian Problem Gambling Index (CPGI) Update

Organizational Affiliates:  
Interprovincial Steering Committee (advisory); OPGRC - fund administration; CCSA -

operating agency; provincial bodies that fund gambling research in Nova Scotia, Quebec, Ontario, Manitoba, British Columbia, and AGRI

In February 2001, a new instrument was launched to measure the prevalence of gambling and problem gambling in the general population. The Canadian Problem Gambling Index (CPGI), introduced under the aegis of the CCSA on behalf of a consortium of provinces, was developed to provide a more accurate measure than other existing instruments. CPGI provides a more holistic view of gambling,

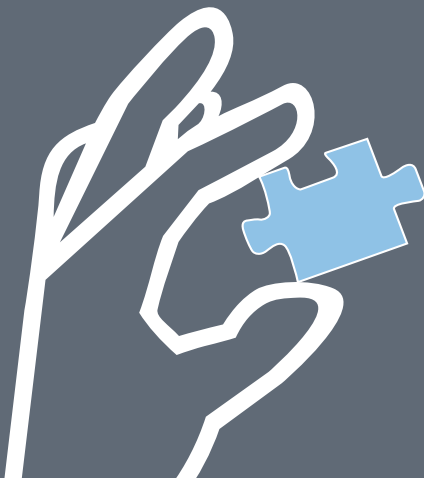
including more indicators of social context, and allows for degrees of problem severity. Other instruments were constructed using clinical samples of problem gamblers who are known to be different from problem gamblers in the general population. As a result, CPGI provides greater distinction among gambling sub-types and should improve our understanding of the progressions from low-risk to problem gambling.

In February 2006 the Interprovincial Steering Committee announced a Request for Applications to conduct a review into the experiences of principal investigators who had used the Canadian Problem Gambling Index (CPGI). The funding partners are a consortium of provincially based resources that jointly fund problem gambling research initiatives that are of common interest. For the current initiative, participating partners include funding resources from the provinces of Quebec, Ontario, Manitoba, Alberta and British Columbia. Healthy Horizons Consulting, led by John McCready, Ph.D., was selected as the successful research team to conduct the CPGI review.

Since its launch, the CPGI has been used in all Canadian provinces except Newfoundland & Labrador, as well as in several other jurisdictions including Queensland and Victoria in Australia, Denmark and Iceland. In the process, a number of researchers have gained broad and substantial experience in the use of the CPGI. It is anticipated that this base of experience can help to assess the instruments performance in meeting its objectives and inform its periodic refinement.



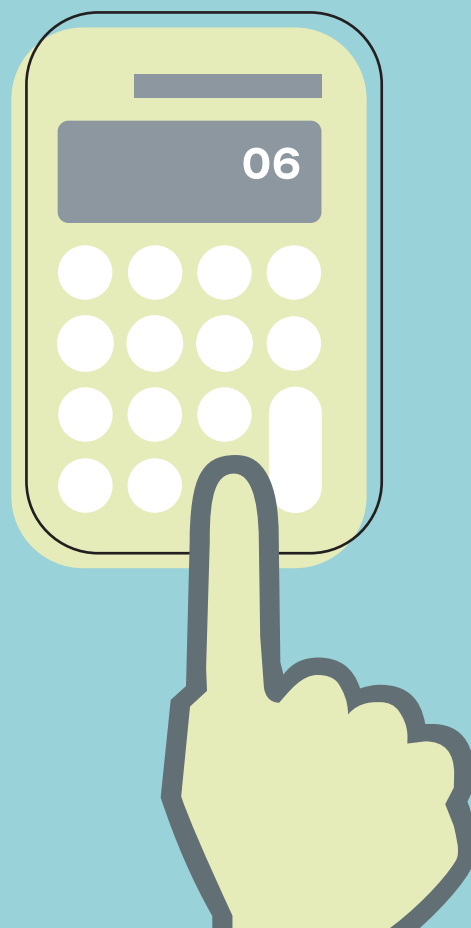
In August 2005, a 'Stakeholders Meeting' was held. Its purpose was to identify common research priorities and deliverables. The outcome of the meeting provided the basis for a draft version of a 'Strategic Research Plan,' a formative document for the pending five-year funding agreement between the Minister of Gaming and the Institute's three partner universities.



## **ALBERTA GAMING RESEARCH INSTITUTE FINANCIAL STATEMENTS**

MARCH 31, 2006

- 19** Auditor's Report
- 20** Statement of Financial Position
- 21** Statement of Operations
- 22** Statement of Cash Flows
- 23** Notes to the Financial Statements
- 28** Schedule of Expenses



## AUDITOR'S REPORT

### To the Board of the Alberta Gaming Research Institute

I have audited the statement of financial position of the Alberta Gaming Research Institute as at March 31, 2006 and the statements of operations and cash flows for the year then ended. These financial statements are the responsibility of the Institute's management. My responsibility is to express an opinion on these financial statements based on my audit.

I conducted my audit in accordance with Canadian generally accepted auditing standards. Those standards require that I plan and perform an audit to obtain reasonable assurance whether the financial statements are free of material misstatement. An audit includes examining, on a test basis, evidence supporting the amounts and disclosures in the financial statements. An audit also includes assessing the accounting principles used and significant estimates made by management, as well as evaluating the overall financial statement presentation.

In my opinion, these financial statements present fairly, in all material respects, the financial position of the Institute as at March 31, 2006 and the results of its operations and its cash flows for the year then ended in accordance with Canadian generally accepted accounting principles.

Edmonton, Alberta  
July 28, 2006

*Original Signed by*  
*Fred J. Dunn, FCA*  
Auditor General

*Note: The official version of this Report of the Auditor General, and the information the Report covers, is in printed form.*

## ALBERTA GAMING RESEARCH INSTITUTE STATEMENT OF FINANCIAL POSITION

AS AT MARCH 31, 2006

	2006	2005
<b>Assets</b>		
Cash (Note 4)	\$ 3,497,431	\$ 2,106,349
Accounts receivable (Note 5)	3,067	1,519,884
Prepaid expenses	2,025	1,068
Capital Assets (Note 6)	375	6,800
	<u>\$ 3,502,898</u>	<u>\$ 3,634,101</u>
<b>Liabilities</b>		
Accounts payable and accrued liabilities	\$ 120,138	\$ 20,839
	120,138	20,839
<b>Net Assets</b>		
Net assets at beginning of year	3,613,262	3,415,959
Net operating results	(230,502)	197,303
Net assets at end of year	<u>3,382,760</u>	<u>3,613,262</u>
	<u>\$ 3,502,898</u>	<u>\$ 3,634,101</u>

The accompanying notes and schedule are part of these financial statements.

Approved by the Board:

<u>Original signed by C. Hosgood</u>	<u>Chair, Audit Committee</u>	<u>Aug 17, 2006</u>
Signature	Position	Date
<u>Original signed by D. Peers</u>	<u>Member, Audit Committee</u>	<u>Aug 17, 2006</u>
Signature	Position	Date

## ALBERTA GAMING RESEARCH INSTITUTE STATEMENT OF OPERATIONS

FOR THE YEAR ENDED MARCH 31, 2006

	2006 Budget (Note 11)	2006 Actual	2005 Actual
<b>Revenues</b>			
Contributions from the Department of Gaming	\$ 1,500,000	\$ 1,500,000	\$ 1,500,000
Interest and Other Revenue	315,000	51,661	25,303
<b>Total Revenues</b>	<b>1,815,000</b>	<b>1,551,661</b>	<b>1,525,303</b>
<b>Expenses (Schedule 1)</b>			
Research	1,307,000	1,314,682	781,850
Infrastructure and Library	235,000	211,207	241,843
Research Linkages	45,000	38,701	67,111
Research Administration	228,000	217,573	237,196
<b>Total Expenses</b>	<b>1,815,000</b>	<b>1,782,163</b>	<b>1,328,000</b>
<b>Net Operating Results</b>	<b>\$ -</b>	<b>\$ (230,502)</b>	<b>\$ 197,303</b>

The accompanying notes and schedule are part of these financial statements.

## ALBERTA GAMING RESEARCH INSTITUTE STATEMENT OF CASH FLOWS

FOR THE YEAR ENDED MARCH 31, 2006

	2006	2005
<b>Operating Transactions</b>		
Contributions from the Department of Gaming	\$ 3,000,000	\$ –
Interest and Other Revenue	51,661	25,303
Research Expenditures	(1,182,975)	(814,468)
Infrastructure and Library Expenditures	(227,434)	(228,279)
Research Linkages Expenditures	(38,701)	(66,145)
Research Administration Expenditures	(211,469)	(226,654)
<b>Cash Flows from Operating Transactions</b>	<b>1,391,082</b>	<b>(1,310,243)</b>
<b>Capital Transactions</b>		
Leasehold improvements and purchase of capital assets	–	(9,566)
<b>Cash Flows from Capital Transactions</b>	<b>–</b>	<b>(9,566)</b>
<b>Net Cash Provided (Used)</b>	<b>1,391,082</b>	<b>(1,319,809)</b>
<b>Cash, Beginning of Year</b>	<b>2,106,349</b>	<b>3,426,158</b>
<b>Cash, End of Year</b>	<b>\$ 3,497,431</b>	<b>\$ 2,106,349</b>

The accompanying notes and schedule are part of these financial statements.



## ALBERTA GAMING RESEARCH INSTITUTE NOTES TO THE FINANCIAL STATEMENTS

MARCH 31, 2006

### Note 1 Authority and Reporting Entity

The Alberta Gaming Research Institute (the Institute) is an unincorporated organization. It is a research consortium comprised of the University of Alberta, the University of Calgary, and the University of Lethbridge (the Institute Universities). Relations between the Institute and the Government of Alberta are defined in an Agreement between the Institute Universities and the Alberta Government dated November 20, 2002. The Institute is directed by a Board comprised of seven members including two appointees (senior administrators and researchers) from each of the three Institute Universities in addition to the Chair of the Alberta Gaming Research Council who is appointed by the Minister of Gaming.

As required under the Agreement, the Institute reporting entity for the purpose of these financial statements is that portion of Institute operations funded by the Department of Gaming. The Institute Universities contribute certain services and supplies, including research and administrative personnel and services, to the consortium. The fair value of these contributions, and the cost of these services and supplies, is not reflected in these financial statements.

### Note 2 Purpose

The purpose of the Institute is to:

- expand the breadth and depth of scientific knowledge into gambling;
- provide education about current knowledge through research publications and reporting of research results;
- provide research related to emergent gaming activities;
- act as a clearinghouse for literature related to gambling research; and,
- forge strong collaborative links with national and international scholars and organizations involved in gaming/gambling research and studies.

### Note 3 Summary of Significant Accounting Policies and Reporting Practices

#### Revenue

All revenues are reported on the accrual method of accounting. Cash received for which goods or services have not been provided by year-end is recorded as deferred revenue.

#### Expenses

Grants are recorded as expenses when all the terms and conditions of eligibility have been met and the Institute has authorized payment of the grant.

### Note 3 Summary of Significant Accounting Policies and Reporting Practices (continued)

#### Assets

Capital assets are recorded at historical cost less accumulated amortization. Capital assets are amortized on a straight-line basis over their estimated useful lives at the following annual rates:

Furniture and equipment	20%
Computer equipment	33 1/3%
Leasehold improvements	Over lease term (2 years)

#### Liabilities

Liabilities represent all financial claims payable by the Institute at the fiscal year end.

#### Net Assets

Net assets represent the difference between the book value of assets held by the Institute and its liabilities.

#### Fair Value

Fair value is the amount of consideration agreed upon in an arm's length transaction between knowledgeable, willing parties who are under no compulsion to act. Due to their short-term nature, the fair values of cash, accounts receivable and accounts payable and accrued liabilities are estimated to approximate their book values.

#### Intellectual Property

Intellectual property rights with respect to all research conducted with the financial support, or under the auspices, of the Institute are governed by the policies of the Institute University with which the researcher is affiliated. These rights do not accrue directly to the Institute and are not recognized in these financial statements. The Government of Alberta and the Institute Universities are entitled to freely use and copy, other than for commercial purposes, any intellectual property so created.

### Note 4 Cash

Cash is held in trust by the University of Alberta. Interest earned on the Institute's cash balance is credited to the Institute and is reflected in these statements.

### Note 5 Accounts Receivable

	2006	2005
Department of Gaming	\$ -	\$ 1,500,000
Due from Institute universities	3,067	14,636
Other	-	5,248
	<u>\$ 3,067</u>	<u>\$ 1,519,884</u>

Accounts receivable are unsecured and non-interest bearing.

## Note 6 Capital Assets

	2006			2005
	Cost	Accumulated Amortization	Net Book Value	Net Book Value
Furniture and equipment	\$ 1,222	\$ 1,222	\$ -	\$ 142
Computer equipment	4,500	4,125	375	1,875
Leasehold improvements	9,566	9,566	-	4,783
<b>Total</b>	<b>\$ 15,288</b>	<b>\$ 14,913</b>	<b>\$ 375</b>	<b>\$ 6,800</b>

## Note 7 Grants to Institute Universities

Grants are provided to the Institute Universities for capacity building, nodal research development, library and collections, and research node administration for gaming related operations. The following table provides an accounting for the grant funds received, and amounts spent by the Institute Universities, to the year-end. Any unspent funds held by an Institute University at the conclusion of these programs or activities will be returned to the Institute.

	2006				2005
	University of Alberta	University of Calgary	University of Lethbridge	Total	Total
Opening balance	\$ 184,480	\$ 114,333	\$ 107,279	\$ 406,092	\$ 332,264
Funding					
Capacity building	100,000	100,000	100,000	300,000	300,000
Nodal research development	30,000	30,000	30,000	90,000	90,000
Library and collections	-	-	160,000	160,000	160,000
Research Node Administration	15,000	15,000	15,000	45,000	45,000
	145,000	145,000	305,000	595,000	595,000
Total Funding Available	329,480	259,333	412,279	1,001,092	927,264
Actual Expenditures	130,640	140,802	305,001	576,443	521,172
Unexpended Funds	\$ 198,840	\$ 118,531	\$ 107,278	\$ 424,649	\$ 406,092

The balance of unexpended funds represents funding for new and continuing projects.

## Note 8 Commitments

The Institute has the following commitments:

Year	Research Grants (a)	Lease (b)	Total
2007	\$ 513,500	\$ 12,818	\$ 526,318
2008	485,409	-	485,409
2009 - 2011	-	-	-
Total	\$ 998,909	\$ 12,818	\$ 1,011,727

### (a) Research Grants

The Institute has three types of granting programs. In response to an annual call for proposals for major grants (maximum of \$80,000/annum for up to two years) and open application period for small (developmental) grants (maximum of \$10,000 for up to one year), the Board approves researcher identified initiatives.

Upon approval of a major or small research grant, and receipt of confirmation of any necessary ethics or other approvals from the host Institute University's Research Services Office, the Institute authorizes payment of 80% of the first year approved award. The remaining 20% is withheld pending satisfactory interim reporting by the principal investigator/researcher. For these types of awards extending beyond one year, authorization of subsequent period amounts is subject to satisfactory reporting and funding availability. Commitments for these awards include the balance of the approved grant awards, subsequent period amounts, and any other approved grant requests for which the researcher has not yet met all of the eligibility criteria.

### (b) Lease

The Institute entered into a lease with the University of Alberta for the period July 1, 2003 to March 31, 2006. To increase accessibility and accommodate the increased business activity of the Institute, effective April 1, 2004, the lease was transferred (with no penalty) to a new campus location (\$12,818/annum payable at \$1,068/month with first and last month of lease due on April 1, 2004). The Letter of Understanding regarding this move was signed on January 22, 2004 and necessary space improvements and computer technical changes were contracted. The Institute renewed the lease for the period April 1, 2006 to March 31, 2007 (with a four-year renewal option), with the same terms and conditions.

## **Note 9 Economic Dependence**

The Institute receives its principal funding from the Department of Gaming. Interest on the trust account held at the University of Alberta is deposited to this account. The one-year agreement between the Alberta Government and the Institute, which expired March 31, 2006, provides funding of \$1,500,000. The Institute's ability to maintain viable operations is dependent upon continued support from the Alberta Government. Permission has been obtained from the Department of Gaming to continue the trust account until March 31, 2007. The Institute and the Department of Gaming are negotiating towards a new funding agreement.

## **Note 10 Related Party Transactions**

During the year, no research grant allocations (2005: \$14,567) were made to Board members.

## **Note 11 Budget**

The revised 2005/06 budget was approved by the Institute's Board of Directors on October 24, 2005.

## ALBERTA GAMING RESEARCH INSTITUTE SCHEDULE OF EXPENSES

## SCHEDULE 1

FOR THE YEAR ENDED MARCH 31, 2006

	2006 Budget	2006 Actual	2005 Actual
<b>Research</b>			
Grant competition/strategic research (1) \$	797,000	\$ 879,627	\$ 380,300
Position and developmental funding (2)	420,000	345,055	311,550
Nodal research development (3)	90,000	90,000	90,000
	<u>1,307,000</u>	<u>1,314,682</u>	<u>781,850</u>
<b>Infrastructure and Library</b>			
Library and collections (4)	160,000	160,000	160,000
Events, colloquia (5)	30,000	6,207	36,843
Research nodes (6)	45,000	45,000	45,000
	<u>235,000</u>	<u>211,207</u>	<u>241,843</u>
<b>Research Linkages</b>			
Communications (7)	30,000	34,685	52,622
Exchange (8)	15,000	4,016	14,489
	<u>45,000</u>	<u>38,701</u>	<u>67,111</u>
<b>Research Administration</b>			
Personnel costs (9)	168,000	149,277	165,173
Contract services (10)	10,000	-	6,198
Administrative hub (11)	50,000	68,296	65,825
	<u>228,000</u>	<u>217,573</u>	<u>237,196</u>
<b>Total Expenses</b>	<b>\$ 1,815,000</b>	<b>\$ 1,782,163</b>	<b>\$ 1,328,000</b>

Note 1 Includes annual research grant competition and Board identified areas of strategic, interjurisdictional, and interorganizational collaborative research.

Note 2 Grants to Institute Universities (\$100,000/university/year) to attract research scholars, small grant developmental funding and support (\$85,000 held centrally) for targeted position (economics).

Note 3 Grants to Institute Universities (\$30,000/university/year) to develop internal research expertise.

Note 4 Grant to the University of Lethbridge to build and maintain a special collection of gambling publications at the consortium universities. The grant also provides funding for specialized information services to interested parties on gambling and gaming matters, development and maintenance of the Institute website, and funding for a junior grade professional librarian.

Note 5 Supports program of formative and summative learning events and forums. Includes cost of an annual conference bringing together Institute associates, topical experts, and other interested persons.

Note 6 Costs associated with administering node operations including local/rotating board meetings, internal and administrative support.

Note 7 Includes print materials and promotional broadcasts, annual report development, writing, and production costs, and conference attendance by Institute representatives to facilitate information dissemination.

Note 8 Includes support for Alberta scholars and experts to travel to other locales to investigate gambling-related matters as well as the travel of national and foreign scholars and experts to Alberta to assist with Institute research.

Note 9 Salary and benefits compensation (Executive Director and administrative support).

Note 10 Special project consulting (eg. document drafting, graphic design work).

Note 11 Includes business and board members meeting travel, hub operational requirements.

## ALBERTA GAMING RESEARCH INSTITUTE BOARD OF DIRECTORS 2005-06



**Back Row (L-R):**

Andy Greenshaw, Chris Hosgood, Rick Szostak, Doug Peers

**Front Row (L-R):**

Dennis Fitzpatrick, Vickii Williams, Nady el-Guebaly, Sheila Murphy, Rhys Stevens

## ALBERTA GAMING RESEARCH INSTITUTE BOARD OF DIRECTORS 2005-06

### Murphy, Mrs. Sheila

Sheila Murphy has been the Chair of the Alberta Gaming Research Council since 1999 and, in this capacity, serves as an ex-officio Director of the Alberta Gaming Research Institute. Previously, she served on the University of Calgary Senate (1990 to 1996) as well as the Air Cadet League of Canada and Cubs and Scouts of Canada Society. She owned and operated the Henderson Colleges of Business from 1972 to 1997.



[photo credit: Alberta Gaming and Liquor Commission]

### el-Guebaly, Dr. Nady



Nady el-Guebaly is Professor and Head, Division of Substance Abuse, Department of Psychiatry at the University of Calgary and past Chair of the Department. He is the Founding Director of the Calgary Health Region's Addiction Centre and Network. His introduction to mental health and addiction medicine dates back to 1969. Currently, he is Chair, Addiction Psychiatry Section of the World Psychiatric Association; and Executive Medical Director and Past-Founding President of the International Society of Addiction Medicine. He has served on the Institute Board since it was established in 1999 and as its Board Chair (and ex-officio member of the Alberta Gaming Research Council) since July 2002.

[photo credit: Cheryl Croucher, Innovation Alberta]

### Greenshaw, Dr. Andrew (Andy)

Andrew Greenshaw was appointed Associate Vice-President (Research) at the University of Alberta for a three-year term beginning January 2004. He completed his PhD in Psychology (Behavioural Pharmacology) in 1982 at University College Cardiff, University of Wales. In 1983 he was appointed to the faculty of the Department of Psychiatry at the University of Alberta. He currently serves as Associate Director of the Neurochemical Research Unit in the Department and has an extensive background in research administration and post-graduate education within the Department of Psychiatry and the Faculty of Medicine and Dentistry. He has served as a Director on the Institute Board since May 2004.



[photo credit: Alberta Synchrotron Institute]

### Szostak, Dr. Richard (Rick)



Rick Szostak is Professor of Economics at the University of Alberta, where he has taught since receiving his PhD from Northwestern University in 1985. He is the author of eight books and over twenty scholarly articles, all of an interdisciplinary nature. He recently completed a three-year term as Associate Dean of Arts. He has served on the Institute Board Director, including as Audit Committee Chair, since June 2001.

[photo credit: ExpressNews, University of Alberta]



### Peers, Dr. Douglas (Doug)

Doug Peers is currently Associate Dean (Research and Development) in the Faculty of Social Sciences at the University of Calgary where he is also a historian specializing in the history of the British Empire with a particular focus on India. He has spent a number of years working on research policy and the mentoring of new researchers at the University of Calgary as well as through various granting agencies, most recently the Social Sciences and Humanities Research Council of Canada where he spent nine months as the interim Vice President of the Programs Branch. He has served on the Institute Board since November 2004.



[photo credit: Bernie Wirzba, CRDC, University of Lethbridge]

### Fitzpatrick, Dr. Dennis



Dennis Fitzpatrick is the Vice-President for Research at the University of Lethbridge. He is a biological scientist by training, holding degrees in biological sciences, nutrition and biochemistry. His research program focused on the environment, nutrition and human health. He maintained an active research program for over twenty years conducting research in two major areas, nutritional toxicology and Andean Foods Systems. He has served as a Board Director, including as Vice-Chair, since the inception of the Institute in 1999.

[photo credit: Bernie Wirzba, CRDC, University of Lethbridge]

### Hosgood, Dr. Christopher (Chris)

Chris Hosgood is Associate Dean of Arts and Science at the University of Lethbridge and a member of the Department of History. His research has focused on consumerism and popular culture in Victorian Britain and, more recently, Canada. He is currently working on a social history of gambling in Alberta and a study of shops and shopping in late-nineteenth century Britain. He has served on the Institute Board since December 2001.



[photo credit: Michael Caldwell]

### Williams, Ms. Vickii



Vickii Williams is the Executive Director of the Alberta Gaming Research Institute and serves in an ex officio advisory capacity on the Institute Board. She represents the Institute on a number of inter-organizational and inter-jurisdictional planning bodies for collaborative research initiatives.

## ALBERTA GAMING RESEARCH INSTITUTE BOARD OF DIRECTORS 2005-06

### **Dr. Nady el-Guebaly**

Board Chair  
Medical Director  
Addiction Centre  
Foothills Medical Centre  
Professor  
Department of Psychiatry  
Faculty of Medicine  
University of Calgary

### **Dr. Dennis Fitzpatrick**

Board Vice-Chair  
Vice-President (Research)  
University of Lethbridge

### **Dr. Chris Hosgood**

Associate Professor  
Department of History  
Associate Dean  
Faculty of Arts and Science  
University of Lethbridge

### **Ms. Sheila Murphy**

Council Chair  
Alberta Gaming Research  
Council

### **Dr. Andrew Greenshaw**

Associate Vice-President  
(Research)  
University of Alberta

### **Dr. Doug Peers**

Associate Dean  
Research and Development  
Faculty of Social Sciences  
University of Calgary

### **Dr. Rick Szostak**

Professor  
Department of Economics  
Faculty of Arts  
University of Alberta

### **Contact information**

#### **Alberta Gaming Research Institute**

HUB Mall  
University of Alberta  
8909S - 112 Street  
Edmonton, AB T6G 2C5  
Phone: (780) 492-2856  
Fax: (780) 492-6125  
Email: abgaming@ualberta.ca

#### **Executive Director**

**Vickii Williams**  
Phone: (780) 492-2817  
Fax: (780) 492-6125  
vickii.williams@ualberta.ca

#### **Institute Librarian**

**Rhys Stevens**  
Phone: (403) 329-5176  
Fax: (403) 329-2234  
rhys.stevens@uleth.ca

#### **Media Contact**

Phone: (780) 492-2856  
Email: abgaming@ualberta.ca

### **Node Coordinators**

#### **University of Alberta**

##### **Dr. Garry Smith**

Gambling Research Specialist  
Faculty of Extension  
Phone: (780) 492-2770  
Email: garry.j.smith@ualberta.ca

#### **University of Calgary**

##### **Dr. David Hodgins**

Professor of Clinical Psychology  
Department of Psychology  
Phone: (403) 670-4785  
Email: dhodgins@ucalgary.ca

#### **University of Lethbridge**

##### **Dr. Robert Williams**

Associate Professor  
School of Health Sciences  
Phone: (403) 382-7128  
Email: robert.williams@uleth.ca

### Credits

**Writers:** David Norwood (davidnorwood-ink)  
Rhys Stevens

**Editor:** Vickii Williams  
Rhys Stevens  
David Norwood (davidnorwood-ink)

**Design:** North Design Group

**Photo Credits:**

Nady el-Guebaly: University of Calgary

Vickii Williams: Richard Siemens, Creative Services,

Stakeholders Meeting (3): Richard Siemens, Creative Services,

Board Members: Mike Lewcio, Faculty of Extension, University of Alberta

(c) Alberta Gaming Research Institute 2006

**ISSN:** 1499-7436 (print)  
1499-7444 (electronic)

Alberta Gaming Research Institute Annual Report  
No. 6, 2005-06



**Alberta Gaming Research Institute  
HUB Mall  
8909S - 112 Street  
Edmonton, Alberta, Canada  
T6G 2C5**

