



# SIMpill

## Real-time Compliance Management

Dr David Green

**simpill**

# Compliance Is a Big Issue



- Between 30 and 70 percent of patients do not take their medication as prescribed
- This costs:
  - Preventable hospitalisation
  - Increased costs of medication by increased prescription costs
  - Resistance to anti-microbials

# How Is Compliance Measured?



- Patient self reports
- Health professional assessment
- Pill counts
- Treatment outcome measures
- Biologic and other markers
- MEMS caps

# Interventions to Improve Compliance



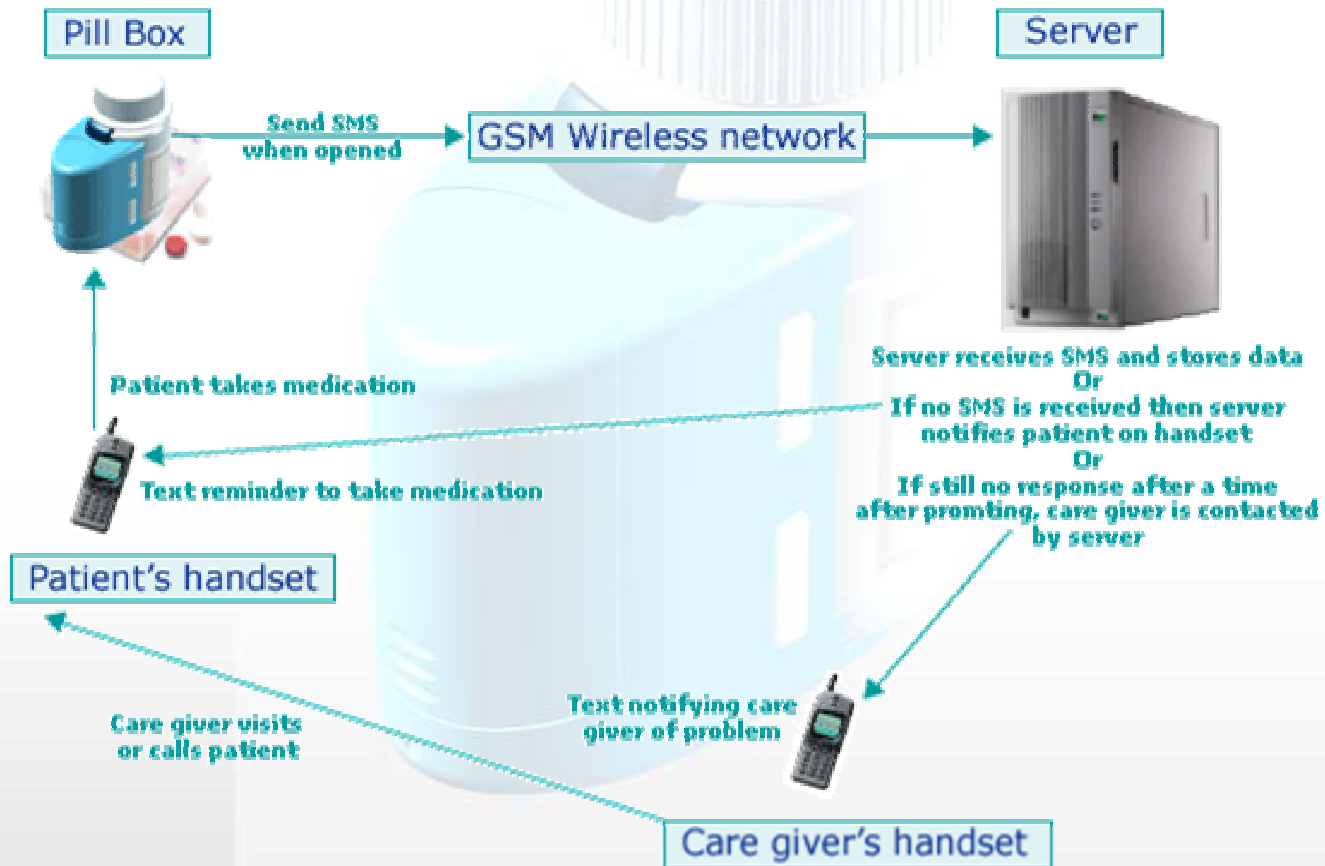
- Patient information systems (leaflets etc.)
- DOT and DOTS (also a measure of compliance)
- Simplifying drug regimens
- Packaging with memory prompts
- Reminders

# Interventions to Improve Compliance (cont)



- Patient support groups
- Rewards of various types – DOTS food parcels, loyalty programmes etc.
- Treatment buddy systems
- Community based caregivers

# The SIMpill Solution



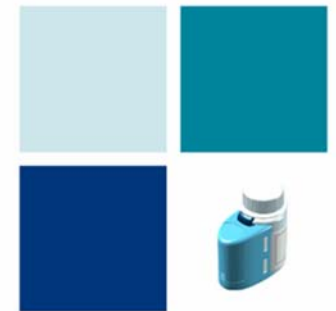
# SIMpill Solution (cont)



- Real time monitoring
- Individual and targeted response to non-compliance
- No response or intervention when compliance is not a problem
- Designed to be minimal effort from the patients perspective.

# SIMpill Solution (cont)

- Battery life and replacement
- No reception?
- What if ....? A self regulating system
- What about those who try to deceive the system?

The SIMpill logo is displayed in a bold, sans-serif font. The word 'SIM' is in a dark blue color, and 'pill' is in a lighter blue color. The 'i' in 'pill' has a small dot above it.

**real time  
compliance  
management**

The SIMpill logo is repeated at the bottom right of the slide, featuring the same color scheme and font as the logo in the top right.

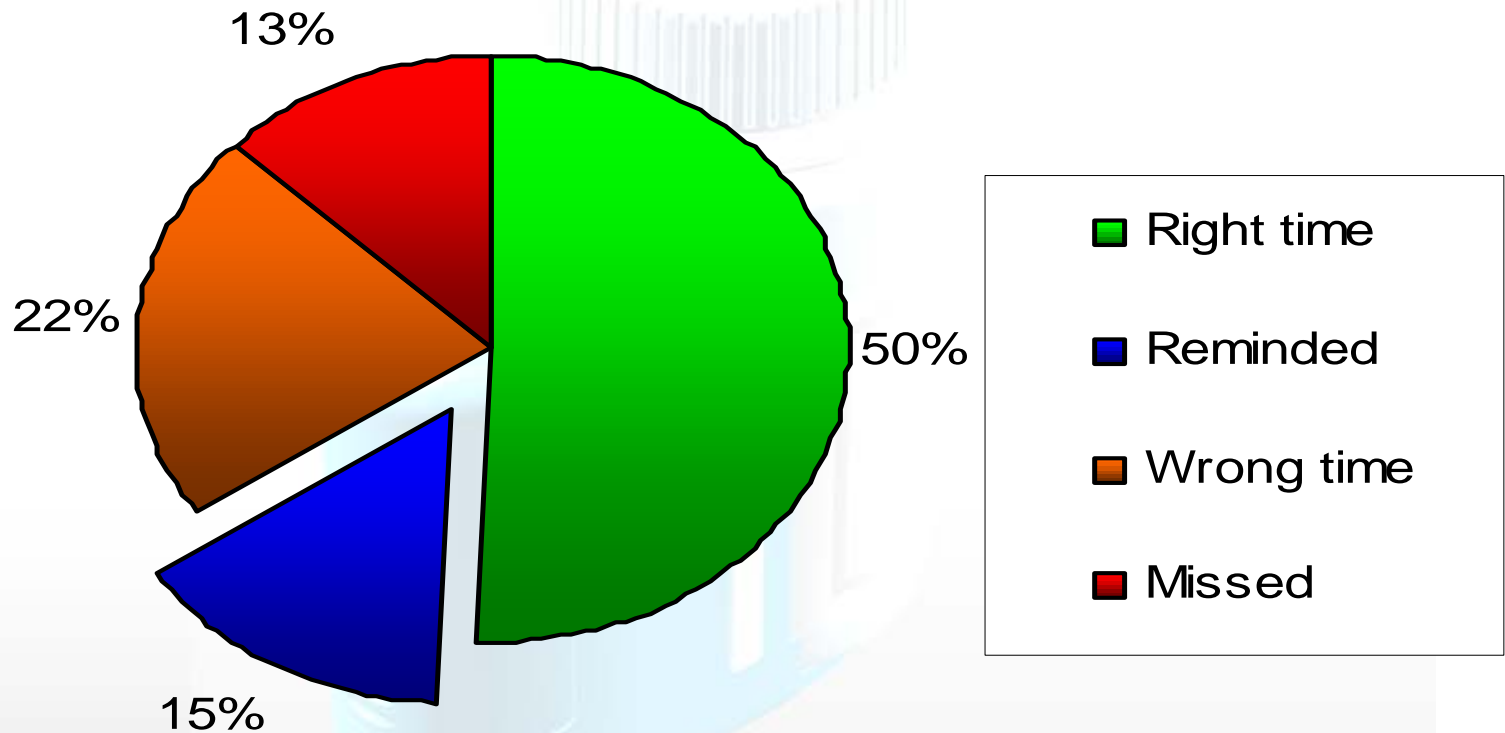


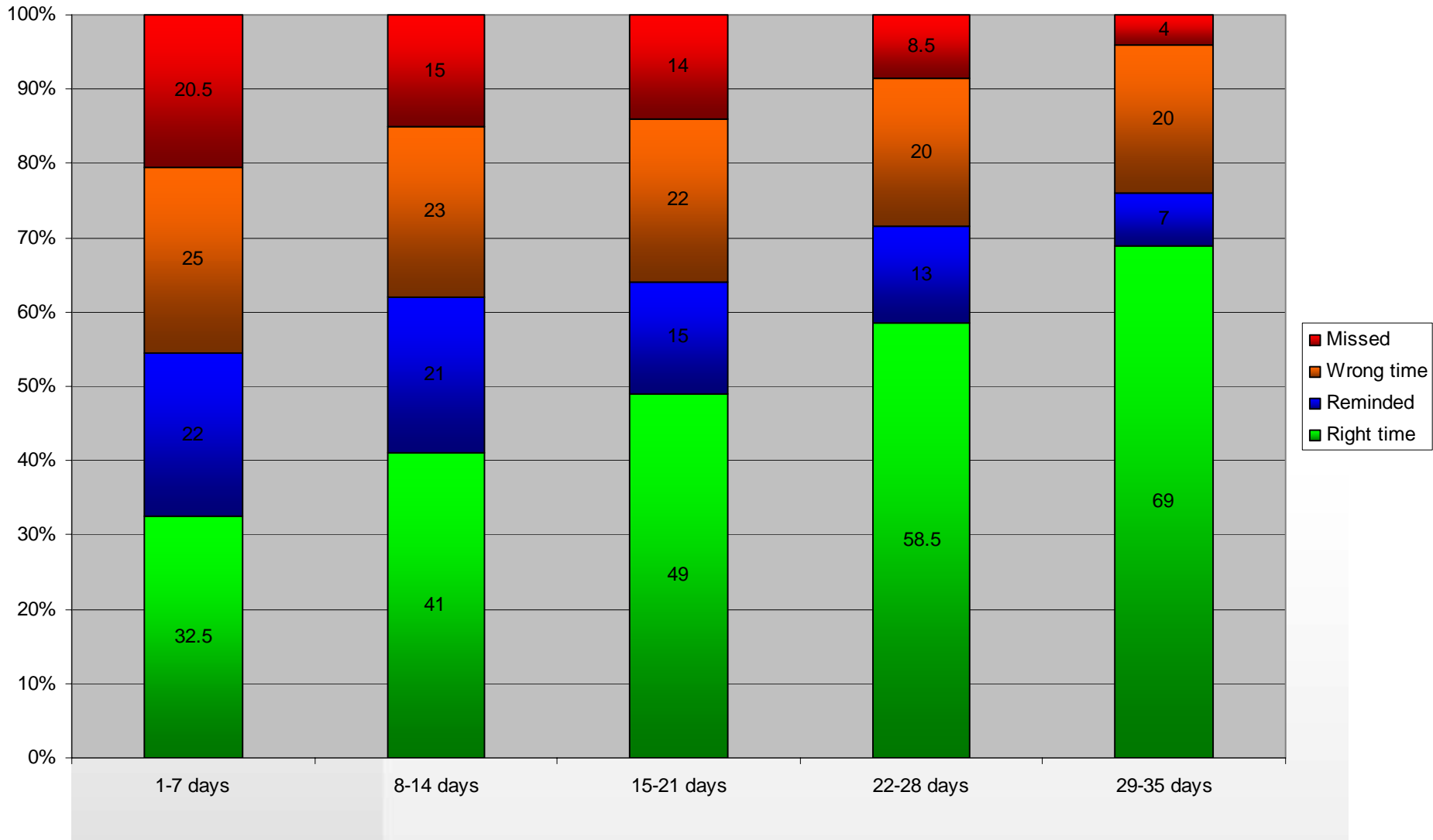
# Pilot Project

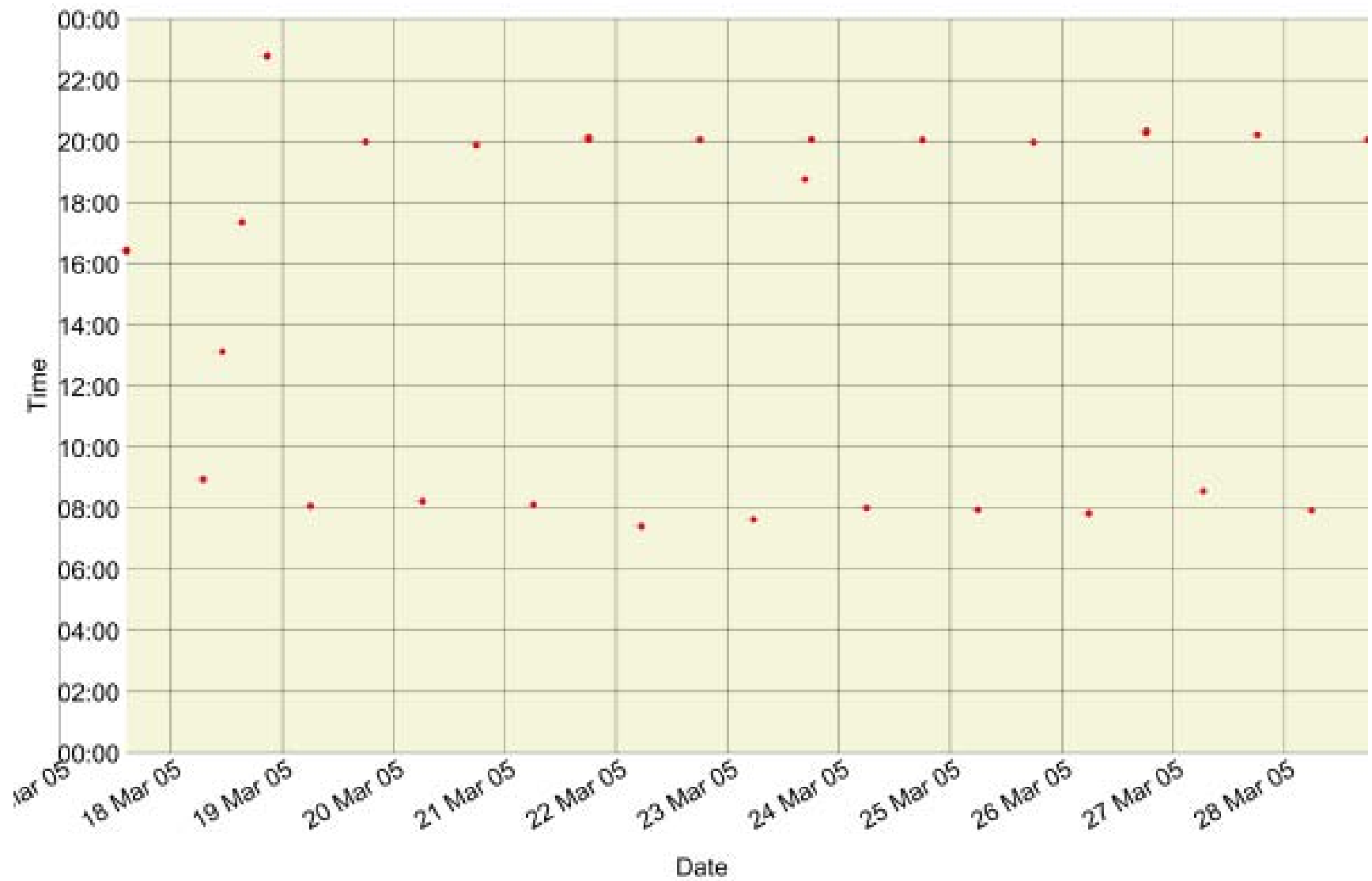


- 90 patients with various diagnoses
- 84 days duration at time of collating this data (ongoing project)
- Average of 1.91 medication events per patient per day (1, 2 or 3 times daily medication)

## Medication Events (n=6540)







# Where To From Here?

- Complete pilots
- Various developments for inhaled medicines
- Use of GPRS for incoming data
- Current availability is, technically, world-wide (except the USA)
- USA from August 2005



**Simpill**



**real time  
compliance  
management**



**Simpill**

**simpill**



**real time  
compliance  
management**

**Questions?**

**simpill**



**real time  
compliance  
management**

**simpill**